

Global Hope 2024

An introduction



www.hope.ac.uk



Global Hope
Liverpool Hope University



What is Global Hope?

Global Hope is the international volunteering programme

run by Liverpool Hope University.

It enables both staff and students to participate in Global Hope partner projects for **4 weeks** during the summer.

As part of the projects, students and staff will volunteer to support the partners based on their identified needs.

We have long standing relationships with multiple project partners.



www.hope.ac.uk



Global Hope
Liverpool Hope University



What is Global Hope?

All Global Hope projects are based around social justice

ranging from engaging in community projects to working with disadvantaged children.

This allows LHU students to select a project which best suits their personal interests.



What is it actually like?

Hard work.

In short it is not a holiday.

You will have a **life changing experience** whilst on your project but you will be required to work whilst there.

The projects take place in developing countries, so the facilities are not what you would expect in the western world.

This also applies to the culture. So be prepared to experience things you may not have previously encountered.



What is it actually like?

There may not always be access to hot running water, WIFI, comfortable beds, air conditioning, western facilities etc.

You may not always enjoy it, but it will be an unforgettable experience.

You may find that changes in climate, food, culture, daily routines etc may get the better of you some days.

So **you need to be resilient.**



Global Hope 2024

In 2024
students and staff
are going on
at least two
projects, but
perhaps four



www.hope.ac.uk



Global Hope
Liverpool Hope University

Global Hope 2024



Perú

A team will go out to Perú where they will assist with social work and education for the poorest people in Perú's second city, Arequipa.

Volunteers work alongside the inspirational Brother Victor Ramos, assisting with various projects aimed at helping the most needy across the city.

These include:

- A community centre
- An elderly people's retirement home
- A primary school



www.hope.ac.uk



Global Hope
Liverpool Hope University

Global Hope 2024

Brazil

A team will go to Brazil.

Members of the Global Hope Project Brazil will volunteer to support the work and development of Ramacrisna Arts Co-operative by developing skills in:

- Art
- Music
- Drama



www.hope.ac.uk



Global Hope
Liverpool Hope University

Global Hope 2024

India

A team will go to India.

Members of the Global Hope Project India will volunteer in connection with Jesus & Mary College, Delhi and will work with slum projects.
The project would include activities around:

- education
- youth engagement
- health promotion
- community development



www.hope.ac.uk



Global Hope
Liverpool Hope University

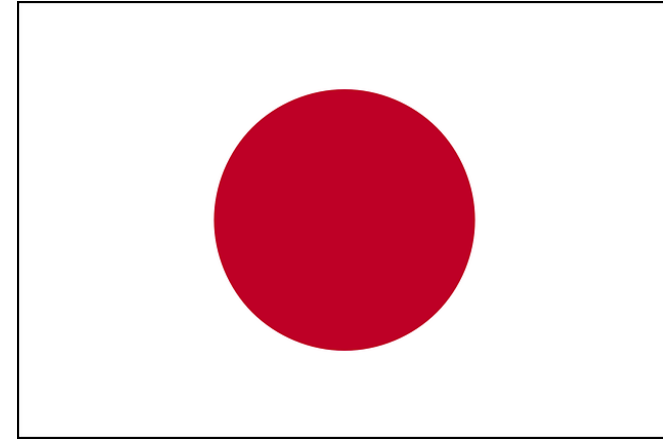
Global Hope 2024

Japan

A team will go to Japan.

The Global Hope Project Japan centres around:

- schools
- Environment (sustainable development goals)
- pilgrimage support, including clearing paths around temples



Global Hope 2024 - contributions

Each Global Hope student will have
given **their full financial contribution of £1,500.**

They will receive fund raising training.



Global Hope 2024

Staff and students

will work as a team and
meet as project teams at least once a month
to prepare for the project up until their departure.



Duration of Projects - 2024

Each project is expected to run for
4 weeks within the summer holidays.

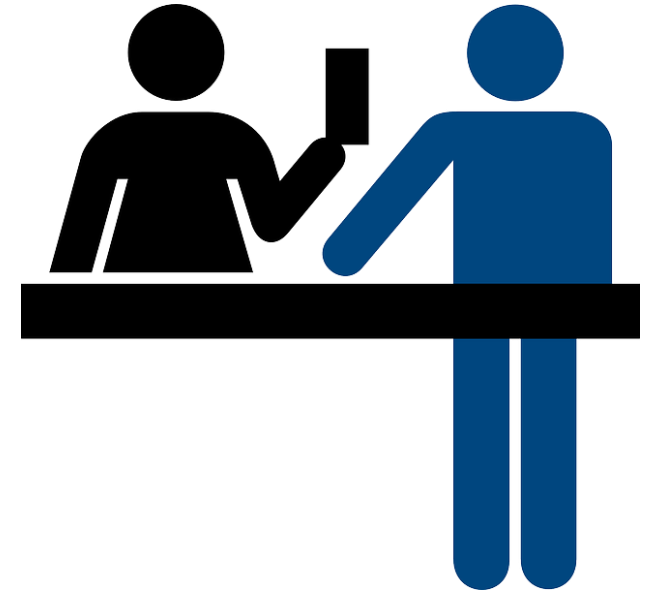


What do we do?

Our dedicated member of staff works at Hope one day a week and will work with you throughout your time with Global Hope to offer advice and track your financial contribution with you.

They can give you fundraising ideas, show you what has worked in the past, give you banners and collection boxes, etc.

We organise the internal transport to and from the project as well as accommodation whilst there, this is all covered in your £1,500 contribution to Global Hope.



www.hope.ac.uk



Global Hope
Liverpool Hope University



What do we do?

We DO NOT pay for:

- **your vaccinations** nor
- **your food whilst you are on the project**, there may be opportunities for you to cook for yourself in your accommodation, you may be cooked for by the project partner and you will pay them directly or you may eat in local cafes and restaurants.
- **for any weekend trips or excursions you choose to take part in**, so please factor this in!



Project team

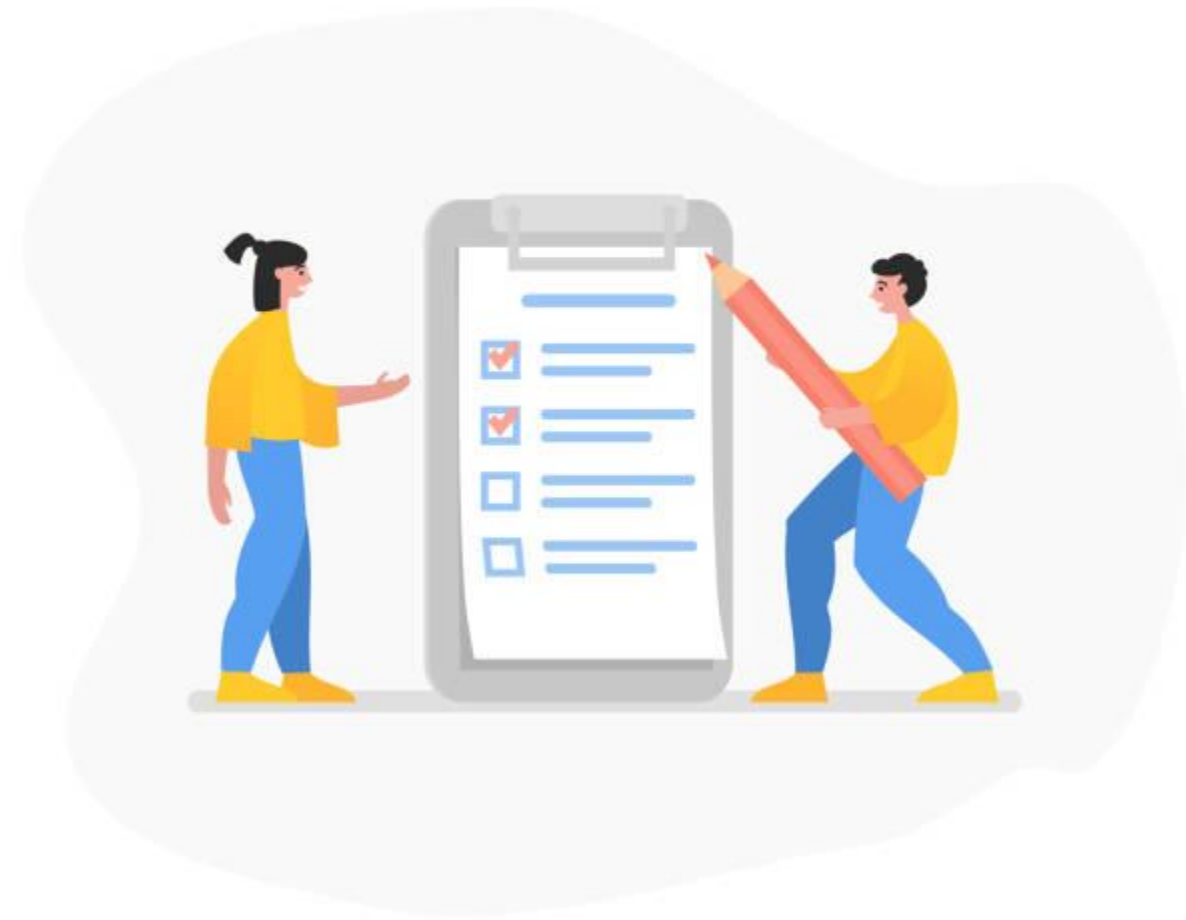
You would also be expected to arrange to meet with your project team multiple times before departure to not only

- prepare for the project but to also
- get to know each other better!



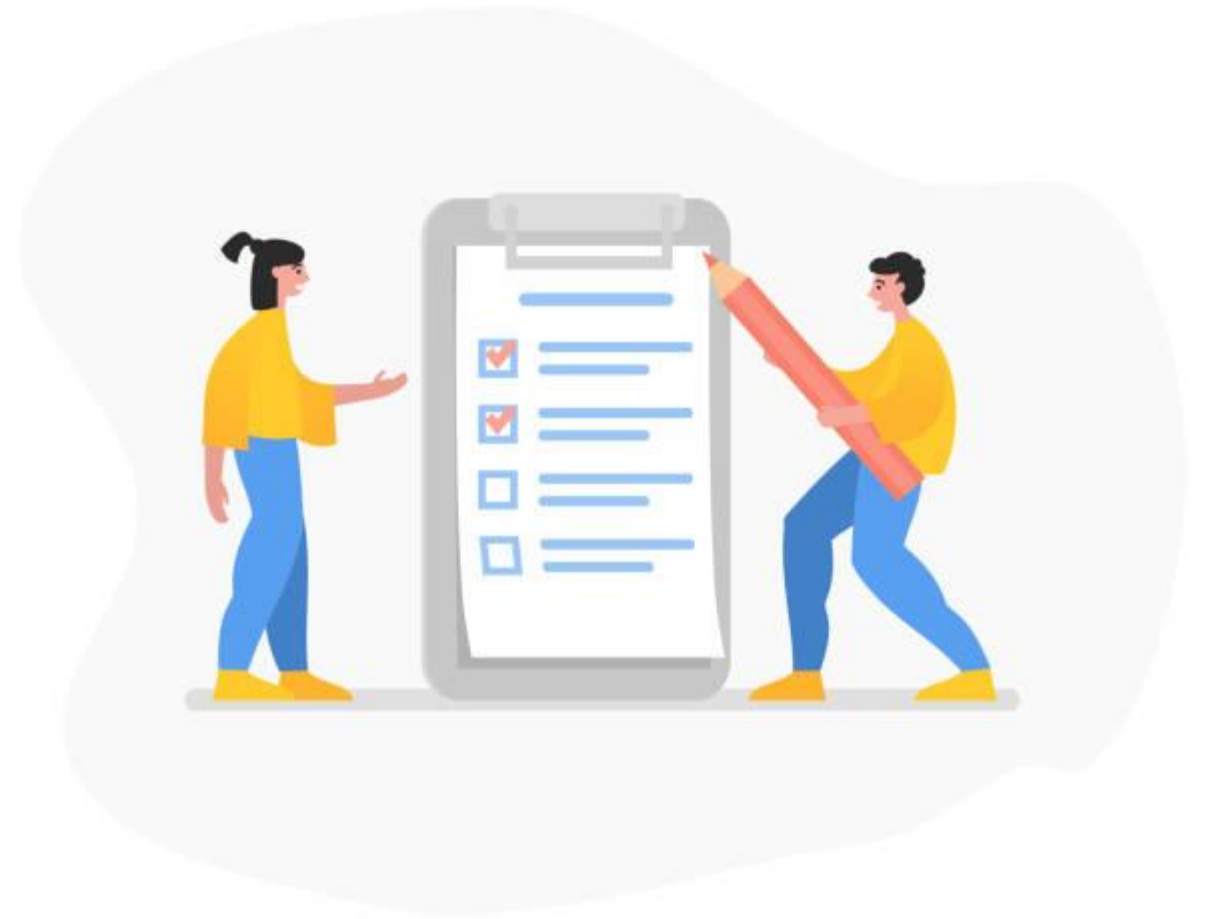
Requirements

- Attend interview
- Be enrolled in the Service and Leadership Award (**SALA**) (Global Hope is a great way to complete SALA)
- Work towards the deadlines and **complete the financial contribution by the end of February 2024**
- Be engaged in your studies, with good academic standing
- Meet the criteria for volunteers which will be sent to students after interview



Requirements

- Show active participation in the Liverpool Hope University Community
- Attendance of **60% +**
- Have the ability to **commit to all training sessions**
- Provide feedback to the Global Hope on your return!



Financial Contribution

You are required to contribute **£1,500** to take part in a Global Hope project.

The projected **final deadline is the end of February 2024.**



Financial Contribution

The money that you contribute to Global Hope, helps to fund your:

- flights
- local transportation
- accommodation
- visas
- the organisation of the project
- emergency medical insurance and also
- emergency contacts whilst on the project



www.hope.ac.uk



Global Hope
Liverpool Hope University



Financial Contribution

You may be eligible for a **Turing grant of a minimum £480** which the University can help you access and which you can put towards your contribution.

Your contribution can come from anywhere:

- You could do different events
- You can also use some of your part time wages to add to your funds
- You can ask for donations from family and friends
- You can also do fundraising in your teams or with friends and family from back home.

Anything is possible.



What next?

You need to:

- ✓ Complete the application form you receive today and hand it **back to Global Hope by 31st October 2023.**

This can be done

- by email (globalhope@hope.ac.uk) or
- by handing in a paper copy to the Global Student and Partnership Centre, 1st Floor, Gateway Building, Hope Park.

- ✓ Be available for **interviews in November.**



www.hope.ac.uk



Global Hope
Liverpool Hope University



What next?

If you are successful, you will be allocated to a project.

You will then need to:

- Attend all training sessions
- Meet with your team at least once a month
- Contribute £1,500
- Be engaged in your project team



Why should I do it?

It is a very **rewarding and self fulfilling experience**.

You will get a lot out of going on a project, probably more than what you give to the project.

Even though you only spend a short time there you may find that you do **come back as a changed person**.

It offers a **different perspective on the** world and makes you think differently about your everyday life.



Why should I do it?

You will be able to have an added experience to your undergraduate studies at Liverpool Hope University, so there is a **CV boost** too!

You will also be well **on your way to completing** your **SALA**.

You may not change the world or have a huge lasting impact but **you will be making a difference** even in a small way to the people you interact with.



Application

If following on from today's talk, you would like to apply for **Global Hope 2024**, please email globalhope@hope.ac.uk and we will send you an application form!

Please return it to us by the 31st October 2023.

Please email us if you would like any further information!



Any questions?



LIVERPOOL
HOPE
UNIVERSITY

www.hope.ac.uk



Global Hope
Liverpool Hope University



Thank you!

Thank you for attending this Intro talk about Global Hope.

If you would like any more information following the session, then again please email **globalhope@hope.ac.uk**



Acknowledgement!

All graphics are taken from free vector graphics at pixabay.com

All images were shared by previous Global Hope participants

Thank you to those contributing to pixabay and to past Global Hope Participants.

